

Most reliable sampler controller

Easy to use customised touch screen with Modbus interface

Fully compliant with ISO, API, and IP sampling standards

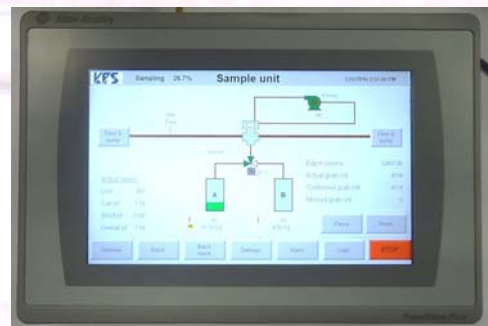
SC-01 Controller

Dedicated Controller
for sampling systems

The KPS SC-01 sampler controller is a dedicated controller to maximize the performance of your auto sampling system. The SC-01 controller is the ideal solution for high demanding liquid sampling systems used at custody transfer and/or fiscal applications:

- The SC-01 sampler controller comes with a large 10 inch touch screen to make it for operators easy to use, to prevent mistakes due to improper handling and to do an easy check upon the status of the auto sampling system.
- Operators no longer need to be so called 'wiz kids' to get control and make changes to their auto sampling system, the SC-01 sampler controller works intuitively due to the touch screen functionality. Furthermore, the controller can be customised to include for specific requirements and to maximize operator convenience.
- Apart from the functional control, the SC-01 allows for traceability of the collected samples from the pipe to the lab and can provide assurance on the integrity of the collected samples. Moreover, the collected data can be logged, providing a performance overview of the transferred fluids over time.
- Finally, the SC-01 sampler controller has a remote I/O functionality using Modbus TCP/IP with web interface. Operators can select upon a customized program e.g. flow proportional or time proportional sampling, monitor any alarms in full detail and can fill in the batch properties such as the batch volume from a distance.

The SC-01 controllers' standard comes with extensive testing for each model to ensure the high quality for end-users. With close to 100 auto samplers installed within a 20 minute range of the head office, in the Rotterdam harbour area. KPS got the opportunity to develop this unique design. The KPS SC-01 is one of the key components of a reliable automatic sampling system.



Specification

Operating standards	ISO 3171, API 8.2, IP 6.2, CE compliance
Ambient temperature range	-20 upto +60°C (-4 upto 140°F)
Environments	Safe area Hazardous area: SC-1 build into Eexd enclosure with viewing window and keyboard interface suitable for Atex Zone 1 environments SIL 1,2,3 applications
Ingress protection	IP66 (if build into enclosure)
Configurations	Batch properties, logging of data Flow proportional or Time proportional Easy integration with complex SCADA / DCS systems
Inputs/Outputs	Modbus TCP/IP (slave) Power supply: 110-240 VAC 50/60 Hz or 24 VDC Analogue I/O's: 6 (additional IO's on request) Digital I/O's: 16 (additional IO's on request)
Mounting & weight:	Panel Mounted, 5 kg (excluding enclosure)

KPS Settings 2/24/2016 2:55:55 PM

1 2

System name: KPS Test
System tag: System-01

Transfer line select: Line 1
Transfer line name: KPS Line
Transfer line tag: Line-01

Max flowrate: 1400.00 m3/hr

Sample grab volume: 1.00 cc
Max grab rate: 60.00 strokes/min
Grab pulse duration: 500 ms

Receiver can size: 18.00 Liters
Sample volume can: 10000 Samples
Default can select: Can A
Receiver can ident: Can 10
Receiver can ident: CAN J

Routing list: Route 04
Routing list: 40.00 m3

Overview Batch Batch report Settings Alarm Login STOP

KPS Settings 2/24/2016 2:56:12 PM

1 2

Performance factor: 0.00 %
STPF: 0.00 %
GPF: 0.00 %
CPF: 0.00 %

Sampler maintenance: 0 grabs
Pump maintenance: 0 hours
Report line freq: 0 grabs

Report mode: Grab

Shutdown runtime Shutdown

Overview Batch Batch report Settings Alarm Login STOP

More info:



Dienstenstraat 25
3161 GN Rhoon, NL
Tel. +31(0)10-5030077
Fax. +31(0)10-5030079
Email: info@KPSnl.com
Web: www.KPSnl.com

OTHER KPS PRODUCTS:

- Automatic Gas Sampling
- Online Analyzer Systems